

## Wilhelmstraße Comfort-Apartment

Wilhelmstraße 15 in 10963 Berlin

Vacation rental\* for up to 2 persons; self-catering

\*Non-smoking, minimum stay: 3 Nights, locations might differ

All floors with elevator - Size of apartment: ca.: 36-40 m<sup>2</sup>



### You will be renting a smart 1-bedroom apartment with balcony for 2 persons

In central Berlin, at the southern end of Friedrichstrasse, close to Checkpoint Charlie and within small walking distance to the closest underground station [U6-Kochstraße]

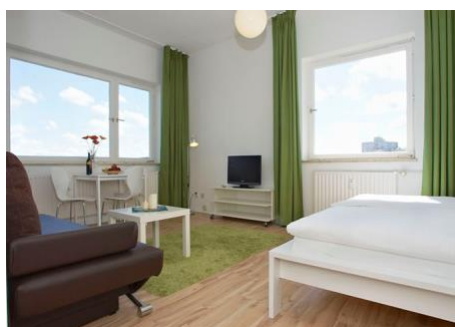
Additional fees of 50 EUR will be incurred for the final cleaning of the holiday apartment. This fee is not included in the displayed "base price" for the accommodation.

On the date of arrival, the flat will be available at 3 PM at the earliest

Check-ins after 10 PM must be arranged and shall be charged 30 EUR Late Check-in fee extra.

Check-ins after 12am need to be arranged and shall be charged 50 EUR Late Check-in fee extra.

Upon departure, the flat is to be vacated by 11 AM.



### Amenities and furniture in our Comfort Apartments\*:

1-bedroom flat with kitchen, bathroom, balcony and hallway\*

\*layout/ground plan may vary

- King-size bed with two separate mattresses
- Fresh linen and towels
- Living room with additional sofa bed
- Dining area for 2 persons
- Balcony
- 32" flat screen TV, Radio
- Kitchenette, stove OR microwave, sink, fridge
- Coffee machine, kettle, toaster
- Glasses, dinnerware & cooking equipment
- Ironing equipment
- Bathroom with bathtub, WC and sink
- Toiletries
- Hair dryer
- Free Wifi

### Other services (non-inclusive)

- Additional bed & towel set for a 3<sup>rd</sup> or 4<sup>th</sup> guest (from 20 EUR/night)
- Baby crib (one-off service fee of 15 EUR); depending on availability
- Extra set of towels (5,00 Euro for 2 persons)